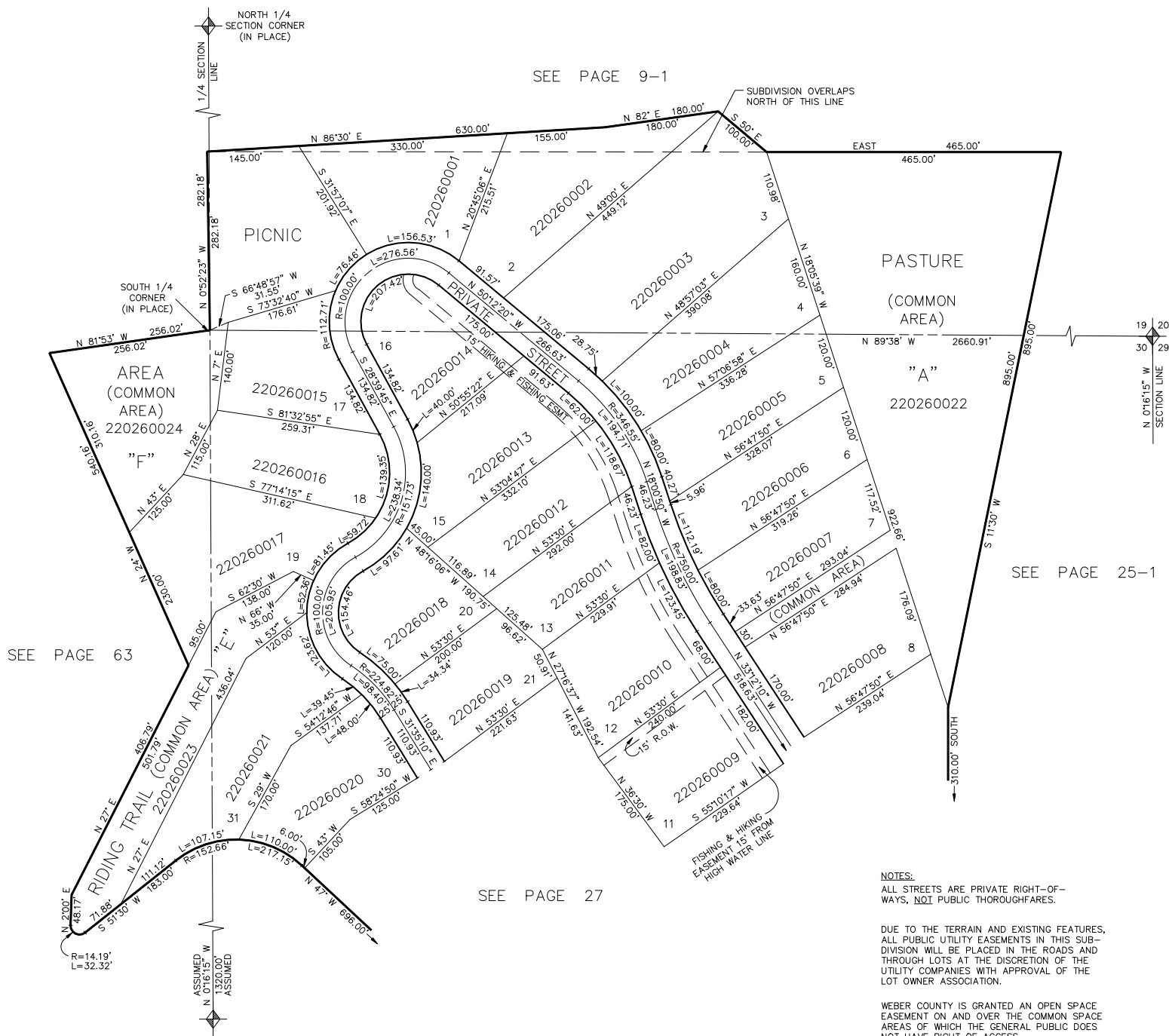


TAXING UNIT: 36

LOTS 1-8, 11-21, 30, 31, A, E, & F

IN WEBER COUNTY

SCALE 1" = 120'



NOTES:

ALL STREETS ARE PRIVATE RIGHT-OF-
WAYS, NOT PUBLIC THOROUGHFARES.

DUE TO THE TERRAIN AND EXISTING FEATURES,
ALL PUBLIC UTILITY EASEMENTS IN THIS SUB-
DIVISION WILL BE PLACED IN THE ROADS AND
THROUGH LOTS AT THE DISCRETION OF THE
UTILITY COMPANIES WITH APPROVAL OF THE
LOT OWNER ASSOCIATION.

WEBER COUNTY IS GRANTED AN OPEN SPACE
EASEMENT ON AND OVER THE COMMON SPACE
AREAS OF WHICH THE GENERAL PUBLIC DOES
NOT HAVE RIGHT OF ACCESS.